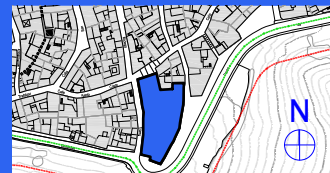
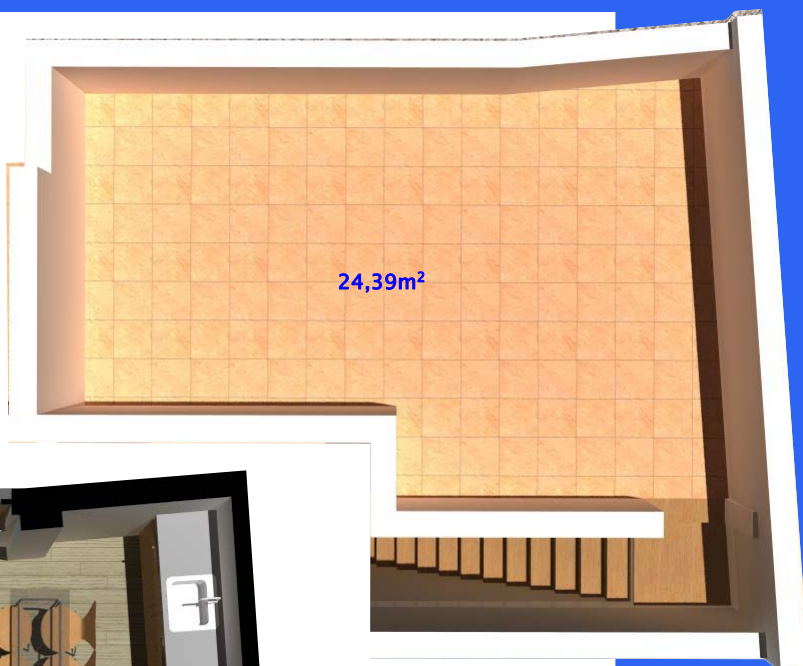


Residencial BODEGA TRIANA en Vejer de la Frontera



NIVEL 4
Terraza



24,39m²

NIVEL 3
Vivienda
Patio



20,52m²

5,51m²

2,17m²

2,85m²

NIVEL 2
Vivienda

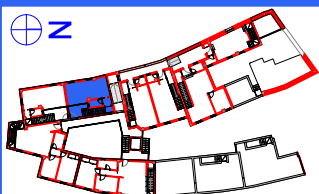


8,37m²

13,88m²

4,26m²

2,09m²



VIVIENDA 10

Superficie Construída : 78,87m²

Superficie útil exterior privada 29,90m²

