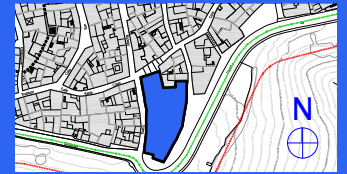


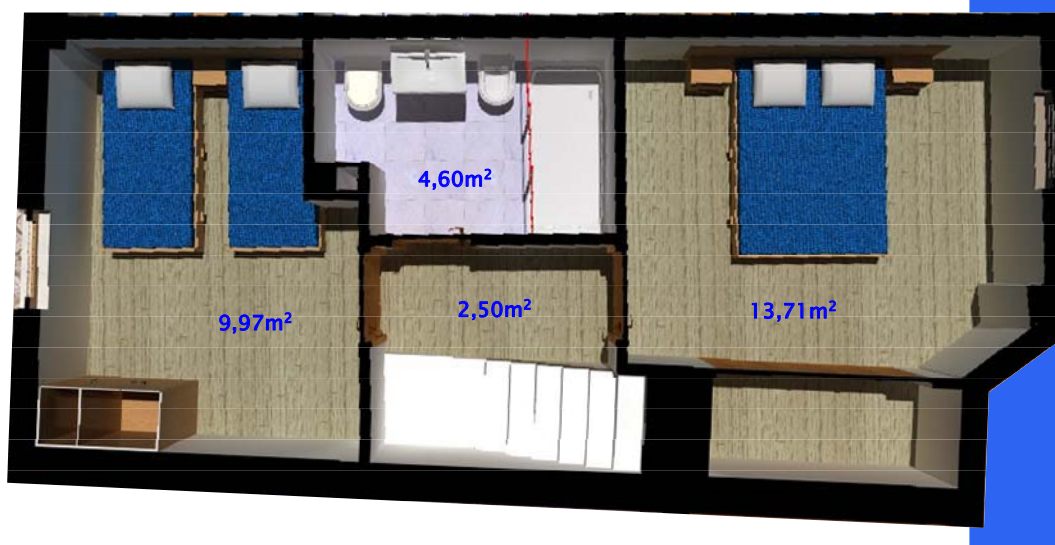
# Residencial BODEGA TRIANA en Vejer de la Frontera



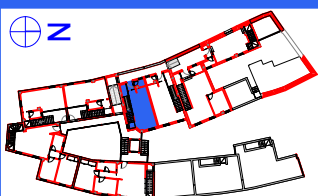
NIVEL 4  
Terraza



NIVEL 3  
Vivienda  
Patio



NIVEL 2  
Vivienda



## VIVIENDA 11

Superficie Construída : 80,03m<sup>2</sup>  
Superficie útil exterior privada 25,80m<sup>2</sup>

