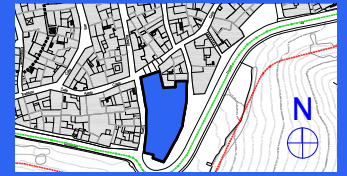
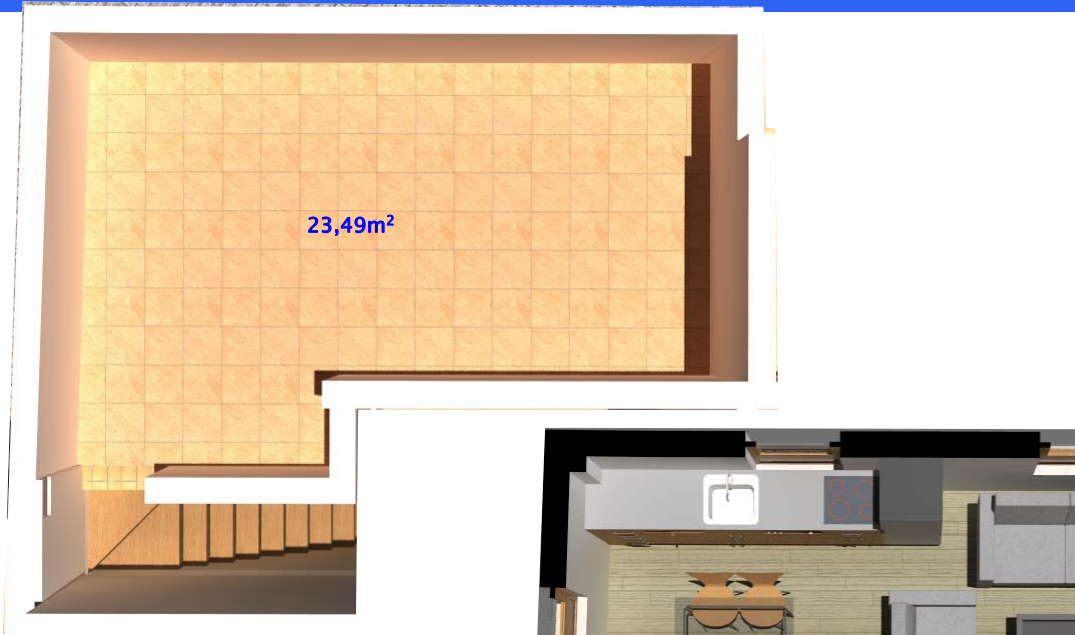


# Residencial BODEGA TRIANA en Vejer de la Frontera



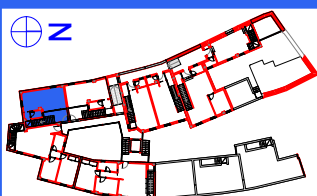
NIVEL 4  
Terraza



NIVEL 3  
Vivienda  
Patio



NIVEL 2  
Vivienda



## VIVIENDA 9

Superficie Construída : 77,86m<sup>2</sup>  
Superficie útil exterior privada 30,21m<sup>2</sup>

